

# Inferring



## What is inference and what do we use to infer?

- Use **clues** and **prior knowledge** to find out what the author doesn't tell us
- It is often based on clues about:
  - character
  - setting
  - mood

## Why do we infer?

- To deepen our understanding about a text

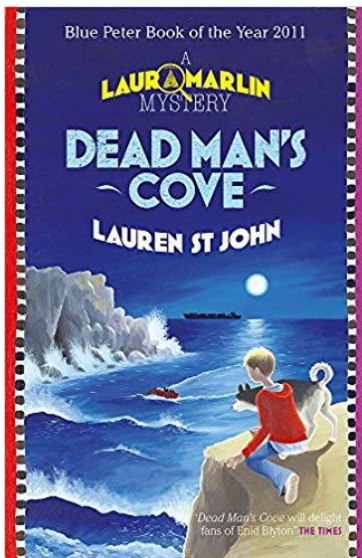
## What makes good inference?

- ✓ Justifying our answers with evidence from the text - **because/P.E.E.**
- ✓ Using detail - closely quoting the exact word/phrase
- ✓ Finding more than one piece of evidence
- ✓ Thinking from the writer's point of view

I think the writer wanted to make the reader feel empathy for this character early on because her role is so important to the story. Using phrases like 'the hour her life began' and 'sum total of her possessions' encourages the reader to feel sympathetic towards her because they hint at an empty life before.

Your

turn:



THEY CAME FOR her at 6.47am. Laura made a note of the time because she'd been waiting for this moment for eleven years, one month and five days and she wanted always to remember it – the hour her life began.

It was still dark but she was already awake. Already packed. The sum total of her possessions had been laid out in her suitcase with a military neatness – two of everything except underwear and books, of which there were seven apiece. One pair of knickers for each day of the week, as ordered by Matron, but not enough novels by half. Then again, Laura wasn't sure how many would be enough. When you spent your whole life waiting,

### Inferring Stems

- The word \* tells me
- The part \* tells me
- This makes me think that
- I think this **character** **because**
- I think the **setting** is
- I think the **mood** is
- I think the **writer's viewpoint** is
- I think this **character's** **viewpoint** is

How was Laura feeling?

Where is this text set?